

ProDekInc.

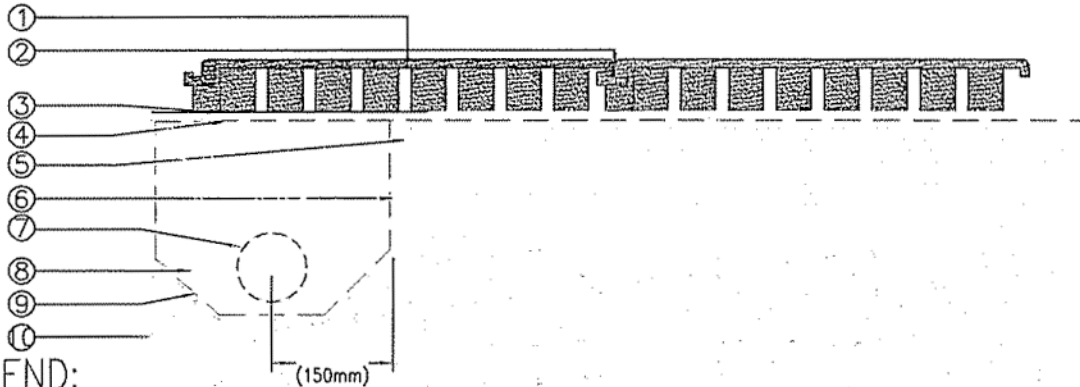
4530 Brazil St. #2

Los Angeles, CA 90039

(818) 502-2111

(818) 502-3331 (Fax)

DETAIL 'A' GRANULAR BASE



LEGEND:

- ① (See Specifications for Depth and Color).
- ② 1/2" (12mm) Diameter Continuous Bead TILE Adhesive at Each KrosLOCK Joint. Cut off "Lock" at any Retainer. Use TILE Adhesive on First 12" (300mm) of the Bottom Edge of Perimeter Tile.
- ③ Minimum 1.0% Slope - 1/4" / 12" (6mm / 300mm) of Sub Base
- ④ Geotextile Terrafix 200R (or Equivalent) Overlap by 12" (300mm) and Tape Joints.
- ⑤ Minimum 1/2" (12mm) Fine Crushed Granite Screenings (As Required) to achieve a Max 1/4" (6mm) Variation in Grade When Measured With a 10' (3m) Straight Edge in any Direction.
- ⑥ Compacted Granular A (Type I) (0-3/4") To 95% S.P.D. (See Specifications for Depth).
- ⑦ 4" (100mm) Perforated Plastic or PVC Drain Tile at 16' (4.9m) On Center.
- ⑧ 3/4" (20mm) Clear Stone.
- ⑨ Wrap with Geotextile Terrafix 200R.
- ⑩ Compacted Subgrade.

NOTES:

1. Ensure subsoil drains towards perforated drain tile.
2. Install perforated drain tile at 16' (4.8m) on center as well as around the perimeter of the TILE® installation. Drain to nearest storm collection system.
3. Back fill around perforated drain tile with 3/4" (20mm) clear stone to 6" (150mm) radius around drain tile. Wrap with Geotextile Terrafix 200R to prevent the compacted aggregate from obstructing the drain.

THICKNESS	CRITICAL FALL HEIGHT (FT)		REVISIONS			
	WITH 10 YEAR PERFORMANCE WARRANTY	WITH 10 YEAR PERFORMANCE WARRANTY	REV	DESCRIPTION	DATE	APPR
	PLUS SERIES	PREMIUM SERIES (EPDM)				
1.75"	3.0	3.0	0	EDITED ISSUE	08/24/04	
2.00"	4.0	4.0	1	UPDATED	10/21/04	
2.25"	5.0	5.0	2	UPDATED	02/02/06	
2.50"	6.0	6.0	3	UPDATED	01/09/07	
2.75"	7.0	7.0				
3.25"	8.0	8.0	SIZE	FSCM NO.	DWG NO.	REV
3.50"	9.0	9.0	A		2000-001	2
3.75"	10.0	10.0				

FILE NAME A0001SK11

PREPARED BY B. GOSS

SCALE

NTS

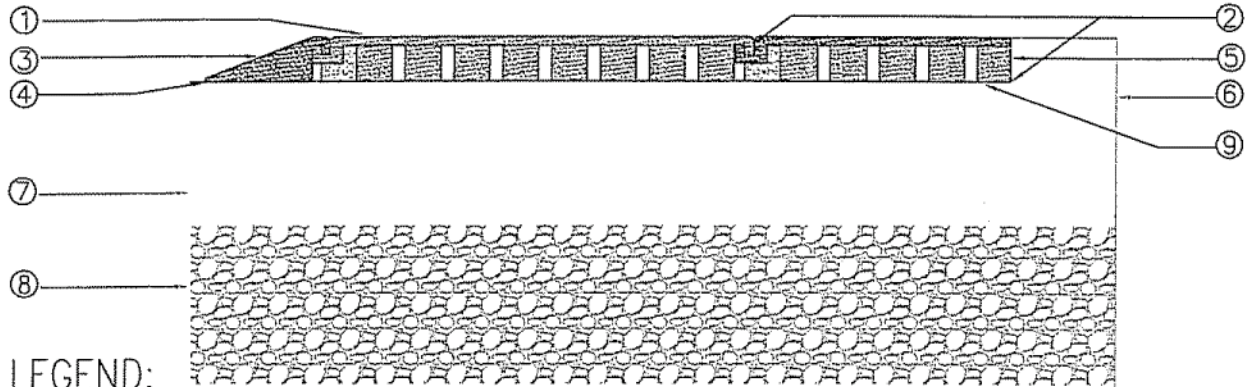
SHEET

SK11

ProDekInc.

4530 Brazil St. #2
 Los Angeles, CA 90039
 (818) 502-2111
 (818) 502-3331 (Fax)

DETAIL 'B' CONCRETE/ASPHALT BASE



LEGEND:

- ① (See Specifications for Depth and Color).
- ② 1/2" Diameter Continuous Bead of TILE Adhesive at Each KrosLOCK Joint.
- ③ 1" / 12" (25mm / 300mm) Sloped RAMP® (ADA) or Standard RAMP - Jr (See Specifications for Details).
- ④ Apply TILE Adhesive to Entire Bottom Edge and locking joint of RAMP.
- ⑤ Cut off "Lock" at any Retainer. Use Adhesive on the Retainer, and Under First 12" (300mm) of Perimeter Tiles.
- ⑥ Concrete or Asphalt Base and Curb (See Specifications for Depth and Details)
- ⑦ Compacted Granular A Type I
- ⑧ Compacted Subgrade.
- ⑨ Minimum 1.0% Slope - 1/4" / 12" (6mm / 300mm).

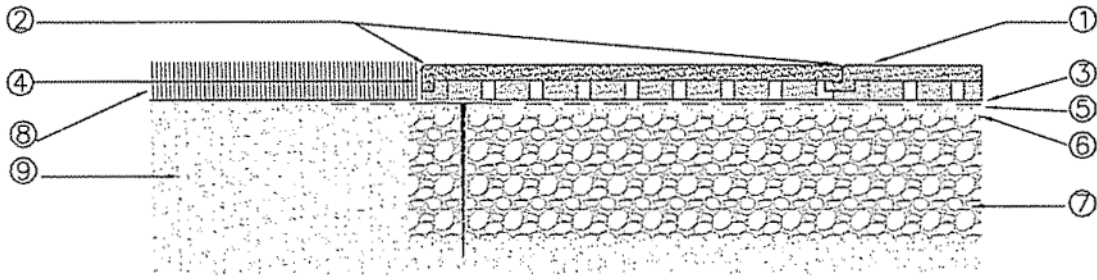
NOTES:

1. Test surface grade using a water flood coat. Repair areas of standing water in excess of thickness of 1/4" (6mm).
2. Install 3/4" (50mm) weeping holes every 3' at lowest point of slope.
3. Allow the following cure times:
 - Asphalt/Concrete base - No Perimeter Solid coat adhesive - 5 Days/5 Days
 - Asphalt/Concrete base - Perimeter Solid coat adhesive - 21 Days/28 Days
4. On asphalt surfaces with a solid adhesive coat:
 - Do not use diesel fuel to lubricate paving equipment. Use soapy water.
 - Do not refuel paving equipment on asphalt surface area to be covered with adhesive.

THICKNESS	CRITICAL FALL HEIGHT (FT)		REVISIONS			
	WITH 10 YEAR PERFORMANCE WARRANTY	WITH 10 YEAR PERFORMANCE WARRANTY	REV	DESCRIPTION	DATE	APPR
	PLUS SERIES	PREMIUM SERIES (EPDM)				
1.75"	3.0	3.0	0	ORIGINAL ISSUE	8/30/04	
2.00"	4.0	4.0	1	UPDATED	10/21/04	
2.25"	5.0	5.0	2	UPDATED	8/30/05	
2.50"	6.0	6.0	3	UPDATED	02/02/06	
2.75"	7.0	7.0				
3.25"	8.0	8.0				
3.50"	9.0	9.0				
3.75"	10.0	10.0				
FILE NAME A0001SK12			PREPARED BY B.GOSS	SCALE	NTS	SHEET SK12
			SIZE A	FSCM NO.	DWG NO. 2000-001	REV 3

ProDeKInc.

4530 Brazil St. #2
 Los Angeles, CA 90039
 (818) 502-2111
 (818) 502-3331 (Fax)



LEGEND:

- ① (See Specifications for Depth and Color).
- ② 1/2" Diameter Continuous Bead of WALK Adhesive at Each KrosLOCK Joint. Apply Adhesive to Retainer
- ③ Minimum 1.0% Slope - 1/4" / 12" (6mm / 300mm).
- ④ Retainer Edge: Commercial Grade Paver Restraint. Dimex Edgepro or Approved Equal
- ⑤ Geotextile Terrafix 200R (or Equivalent) Overlap by 12" (300mm) and Tape Joints
- ⑥ Minimum 1/2" (12mm) Fine Crushed Granite Screenings (As Required) to achieve a Max 1/4" (6mm) Variation in Grade. When Measured With a 10' (3m) Straight Edge in any Direction.
- ⑦ Compacted Granular A (Type I) To 95% S.P.D (See Specifications for Depth)
- ⑧ Sod
- ⑨ Ground

				REVISIONS			
REV	DESCRIPTION			DATE	APPR		
0	ORIGINAL ISSUE			1/24/08			
SIZE	FSCM NO.	DWG NO.		REV			
A		2000-001		0			
FILE NAME	PREPARED BY	SCALE	NTS	SHEET	SK14		
A0001SK14							